

ART FOR FREEDOM, HOPE AND OPPORTUNITIES

Maa**gaard**
glass





MY ART FULFILS MY DREAM

Because of the stressful lives we lead in today's world it is important that once in a while we take a break and reflect upon our dreams.

We must listen to our burning passions.

My passion is glassart!

Agnethe Maagaard

THE PROCESS

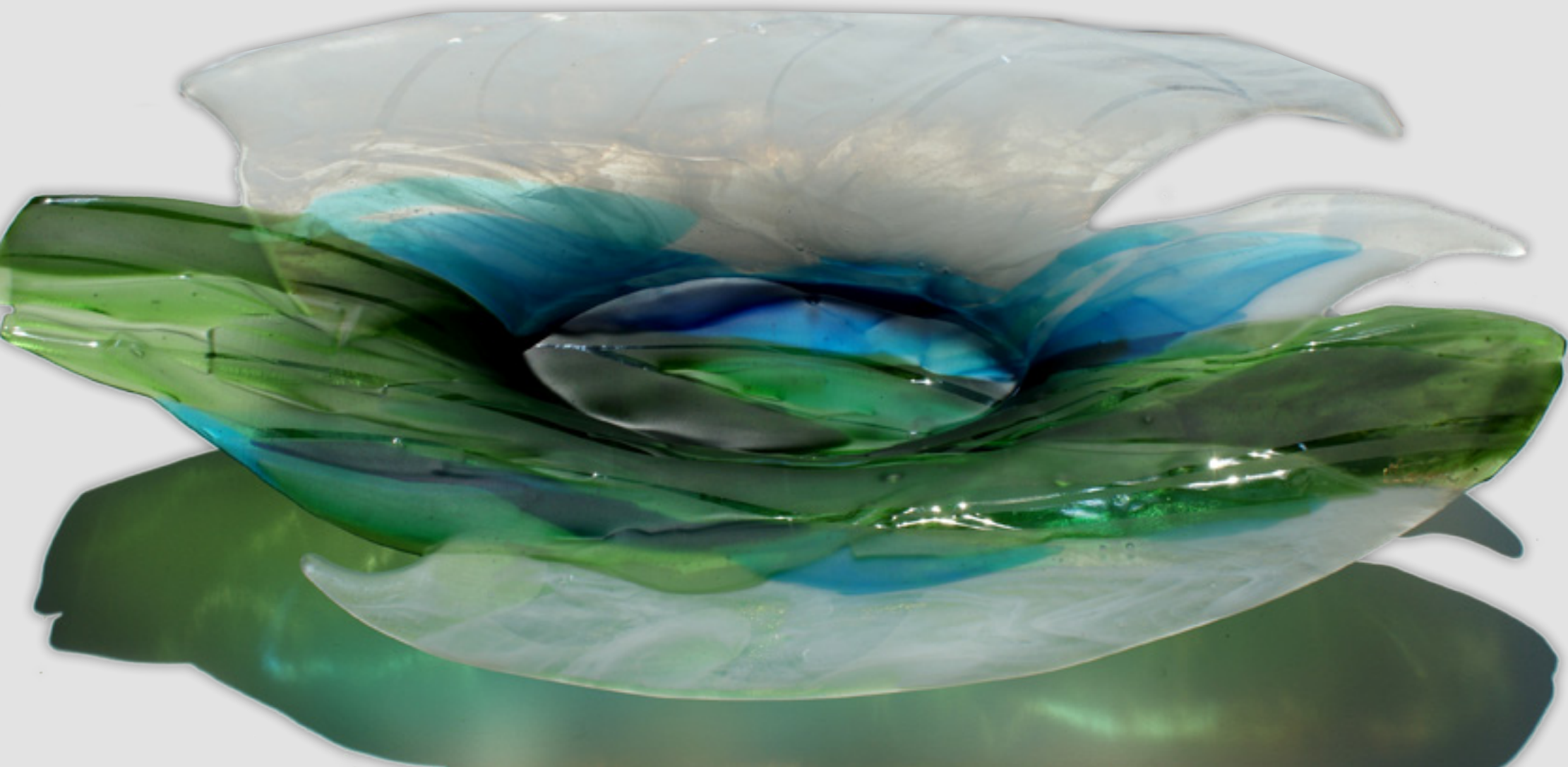
My works are all designed from raw glass and are therefore unique, each with its special design and history.



ART FOR HOMES & PUBLIC SPACES



THE GIFT FOR THE QUEEN



THE QUEEN OF DENMARK - VISITING MY GALLERY

In connection with the anniversary of Lemvig, September 6th 2009, Queen Margrethe II of Denmark visited Maagaard Gallery in Bøvlingbjerg.

For this occasion Agnethe Maagaard designed the official gift from the Municipality of Lemvig to the royal family: The art dish: "The land of Hills and Waves."

THE LAND OF HILLS AND WAVES

INSPIRATION:

Our beautiful landscape of hills and waves in Western Jutland.

DESIGN:

Frosted blue, turquoise and green patterns.

Approximately 90 x 60 cm



THE GIFT FOR CROWN PRINCESS MARY

ORDERING TASK:

Art for HOPE and TOLERANCE for Crown Princess Mary of Denmark.

Inspiration from the Mary Foundation's aim of RESPECT, A BETTER LIFE, HOPE, TOLERANCE and CARE.

Approximately 90 x 25 cm

"It has been a great honour for me to be allowed to design a gift for Crown Princess Mary and thereby examine what the Crown Princess is passionate about: The Mary Foundation"

Agnethe Maagaard







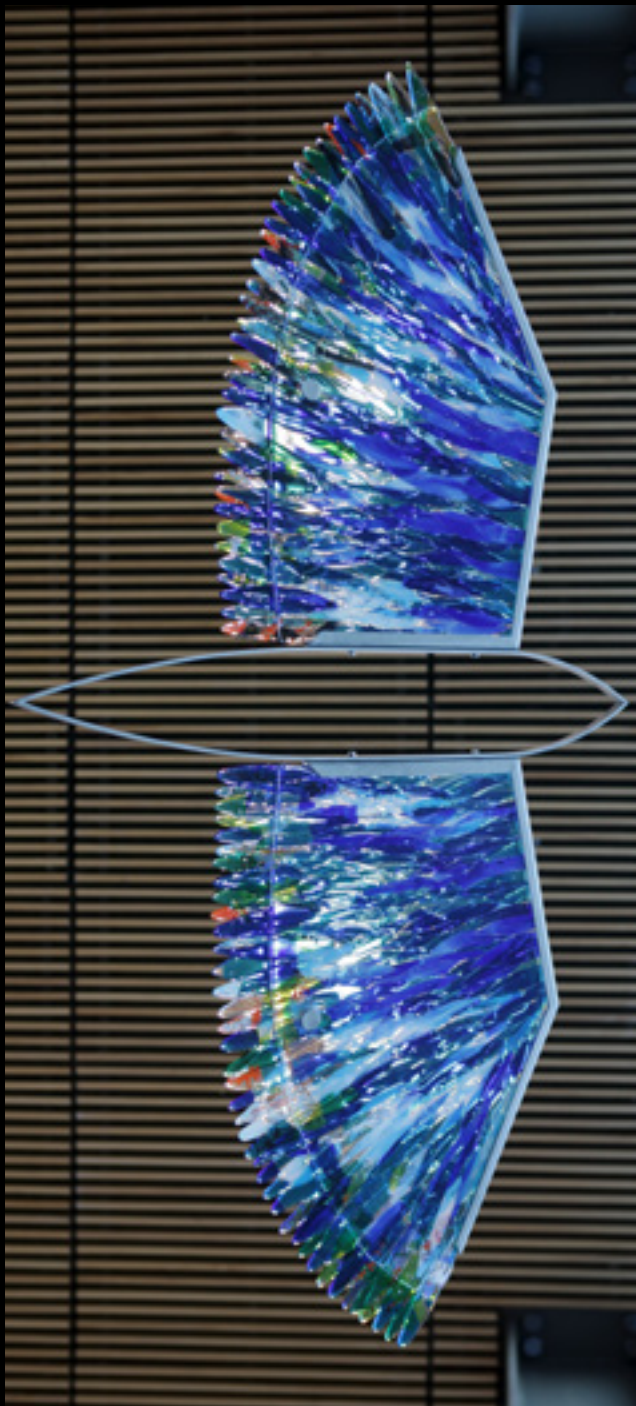
DECORATING TASK FOR RINGKØBING SCHOOL

TRY YOUR WINGS

INSPIRATION:

Young people who are fledged, and ready to try
their wings they leave the nest.

Approximately 290 x 70 cm



CHURCH DECORATIONS FOR DYBE CHURCH 2013

LEFT: The Burning Bush 165 x 65 cm

RIGHT: The Tree of Life 165 x 65 cm



DUBAI MARINA

INSPIRATION:

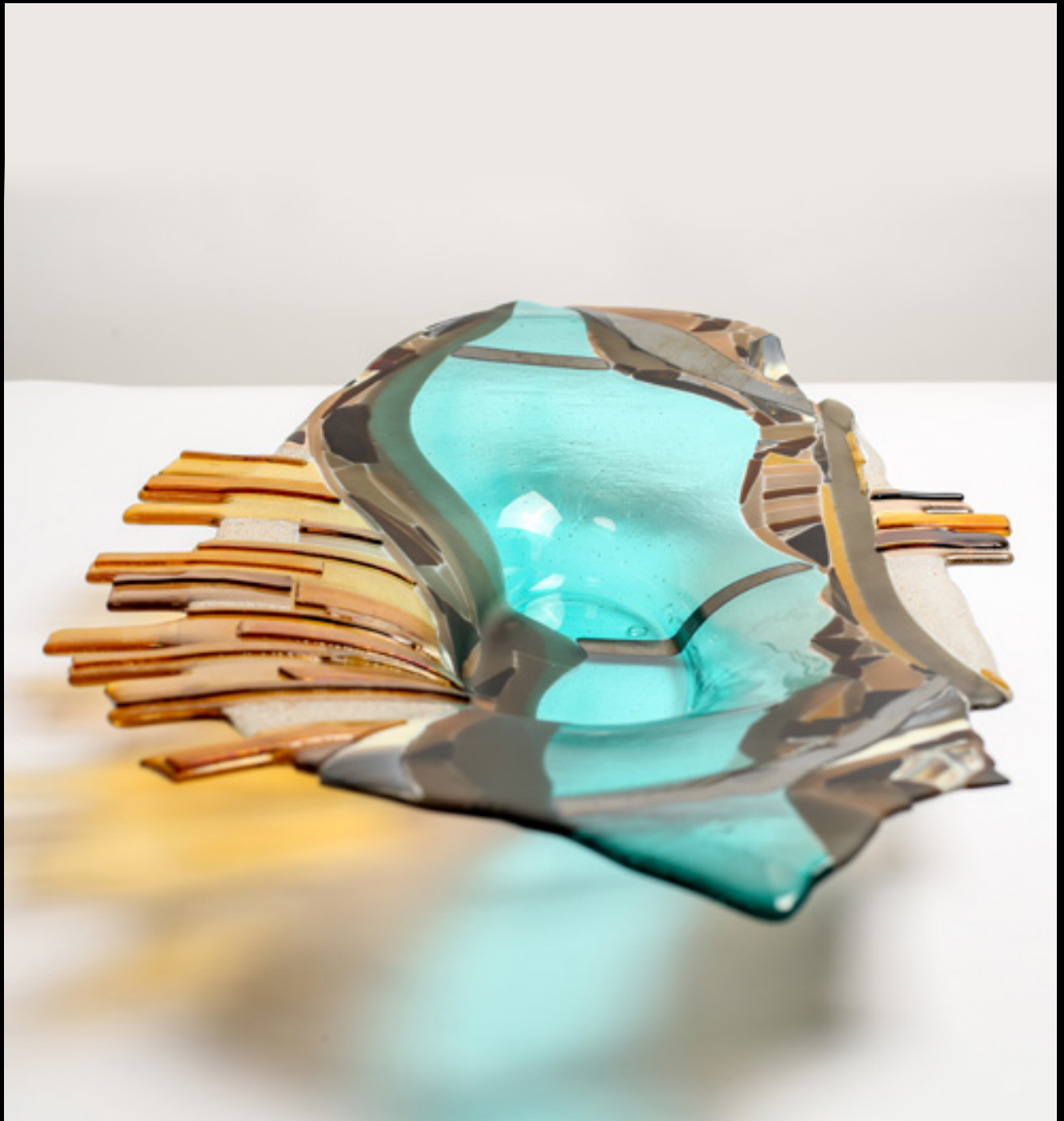
Foto taken from Bur Khalifa overlooking Dubai marina.

DESIGN:

Skyscrapers, the roads, the beautiful turquoise waters and the surrounding desert emphasized at the inlay effects with sand.

Mixed brown frosted glass and golden yellow stylized skyscrapers and sand effects.

Approximately 90 x 60 cm





SAILS

INSPIRATION:
The landmark of Dubai, Burj Al Arab

DESIGN:
Coloured glass with frosted patterns.

The shape supports the moves in the sails.

Approximately 90 x 25 cm



GOLDEN GROWTH

INSPIRATION:

Tribute to prosperity and all that germinate and grow.

DESIGN:

Mixed brown and black mottled glass with golden effects. Leaf effects supports the theme.

The shape supports the growth.

Approximately 70 x 40 cm



GOLDEN GROWTH

INSPIRATION:

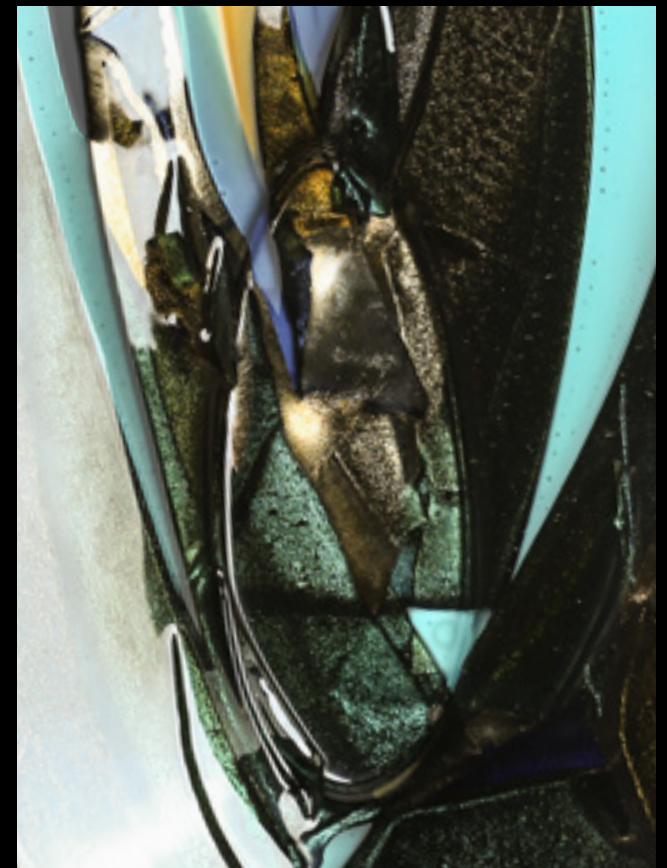
Tribute to prosperity and all that germinate and grow

DESIGN:

Mixed brown/turquoise and black mottled glass with golden effects. Leaf effects supports the theme.

The shape supports the growth.

Approximately 70 x 40 cm



GROWTH

INSPIRATION:

Tribute to prosperity and all that germinate and grow

DESIGN:

Mixed brown/turquoise and black mottled glass with golden effects. Leaf effects supports the theme.

The shape supports the growth

Approximately 90 x 25 cm



ART FOR HOMES & PUBLIC SPACES



FEARTHERS

INSPIRATION:

The unikke design of the feather - its flexibility and strength

DESIGN:

Frosted mixed black and golden glass with golden and light feather effects.

The shape supports the birds feather

Approximately 90 x 25 cm





WINGS

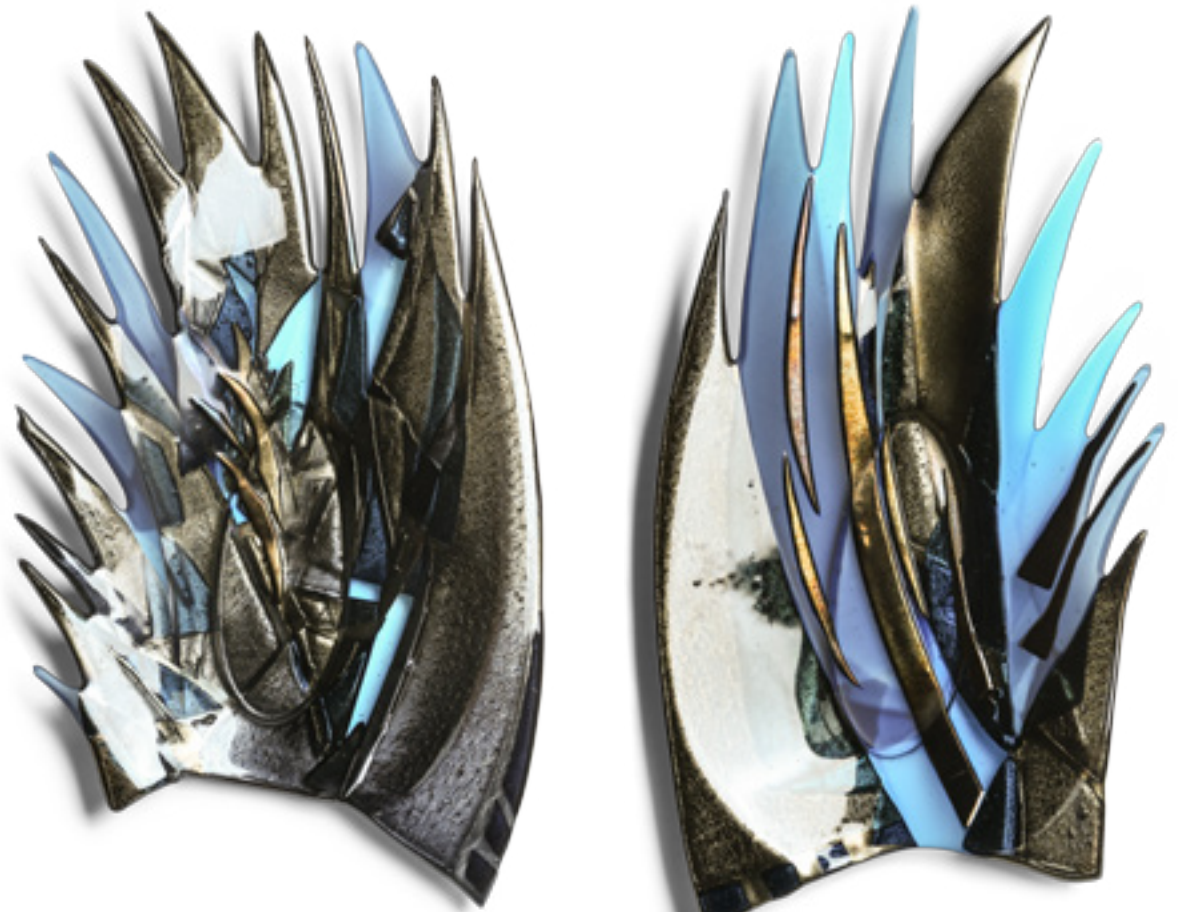
INSPIRATION:
Falcon - UAE national bird.

It symbolizes strength, courage, pride, grace, and force

DESIGN:
Blue and turquoise frosted glass with golden effects.

The shape supports the birds wing

Approximately 70 x 40 cm





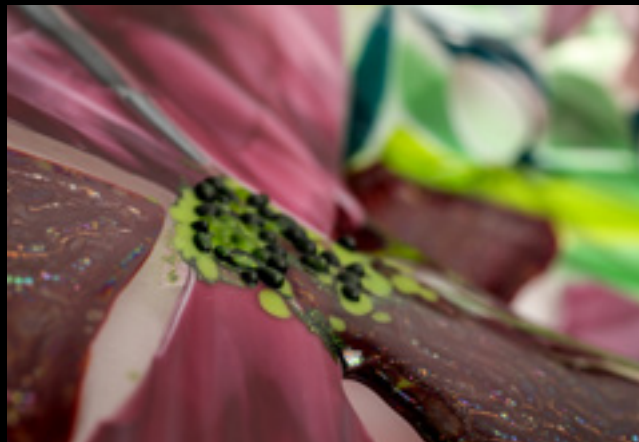
SUMMERTIME

INSPIRATION:
Lovely Danish summer with flowers blooming.

DESIGN:
Frosted glass with stylized flowers and green leaf effects.

The shape supports the light summer theme.

Approximately 80 x 50 cm



ORDERING TASKS FOR THE DANISH NATIONAL CULINARY TEAM

Inspiration for salad centerpiece: Red and green endive.

DESIGN:
Frosted glass with green and burgundy shades





BLUE HORIZONS

INSPIRATION:
The Sea.

DESIGN:
Blue frosted glass with dark and glossy effects.

Approximately 90 x 25 cm



SHOALS

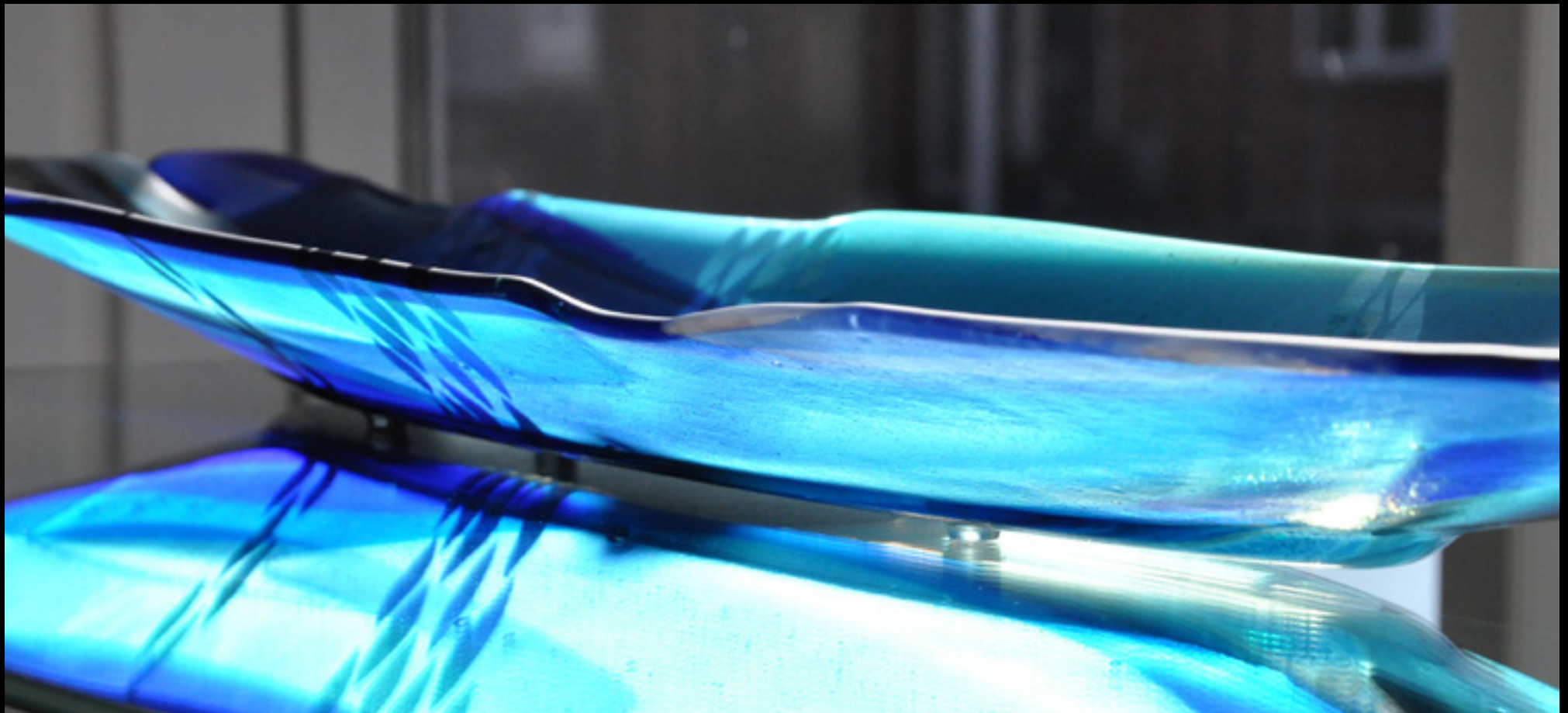
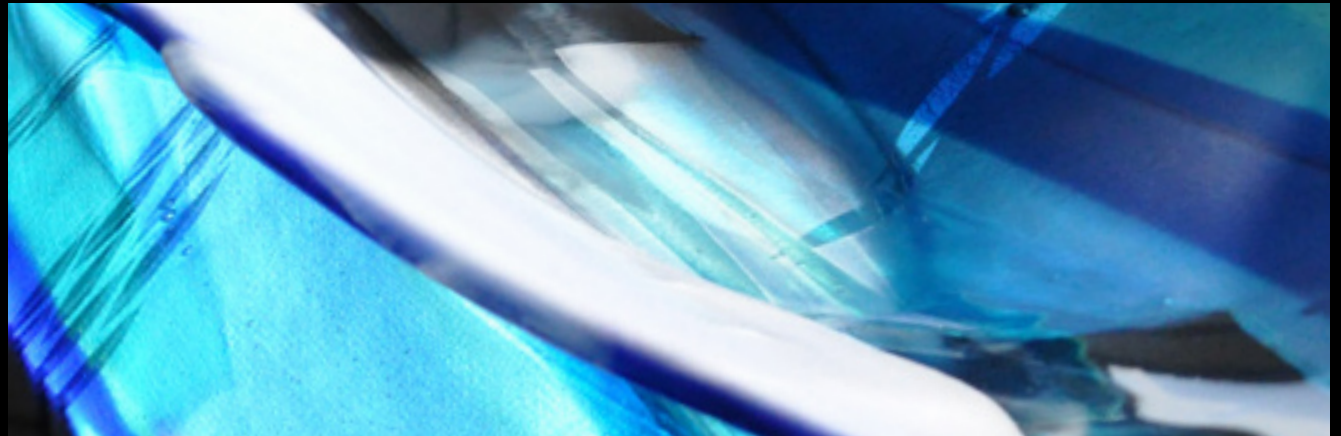
INSPIRATION:

Shoals of fish and the enormous wealth of the sea and its exciting world.

DESIGN:

Frosted blue and turquoise glass with lighting effects and patterns of fish shoals.

Approximately 90 x 25 cm



"I make the glass come alive and take nature into my mind and convert impressions to expressions."

Agnethe Maagaard



"When I work with my art I go into my bubble, forgetting myself letting my imagination and the glass take control."

Agnethe Maagaard

"I don't draw sketches, but let the colours and shapes inspire me. The glass has its own life and during the process I get many challenges and opportunities."

Agnethe Maagaard



"I paint with the glass using the colours as brushstrokes on my canvas."

Agnethe Maagaard





"If you have a dream, then go for it. My art fulfill my dream."

Agnethe Maagaard

My inspiration: Dubai marina



"I always work with contrasts and find it exciting to put together and explore the sculptural form universe."

Agnethe Maagaard





*"I work through the motives from my remembrance.
Then the inspiration is stored up and is transformed into
something I can use in my art ."*

Agnethe Maagaard



*"Catch the opportunities
life gives you. What do you
have to loose!"*

Agnethe Maagaard



Maagaard glass

Agethe Maagaard
Tangsoegade 36
DK-7650 Boevlingbjerg
Denmark

Mobil +45 6127 7154
info@maagaardglass.com
www.maagaardglass.com